

# CASE STUDY

From Nursing Home to Office Patient:  
Adapting Care for All Patient  
Populations

## THE PROBLEM

Our team was consulted to see a patient at a nursing home presenting with several wounds, including a new stage 4 pressure of the right hip measuring 11.3cm length x 12.0cm width x 2.7cm depth (Image A). With weekly treatment, the pressure ulcer healed to be smaller by almost half the area and over half the depth by the time the patient was ready to be discharged from the facility (Image B). However, the wound still needed extensive care and the patient was unsure what to do.

## THE SOLUTION

After being discharged from the nursing home, the patient began coming into our office for weekly follow up visits to care for his wounds. Between our compassionate and patient staff and accommodating office, he was able to transition his wound care from the nursing home setting to the office setting.

## THE RESULTS

One by one, the wounds began to heal, including the pressure ulcer on his right hip (Image C). Our outcomes are 50% better compared to those in hospital based wound centers. The patient and his wife were able to obtain care in town, and even made each visit a date by visiting the local coffee shop in the office plaza.



## HOW TO GET EXCELLENT SKIN CARE

If you or one of your loved ones would like to receive the same kind of care, contact us :

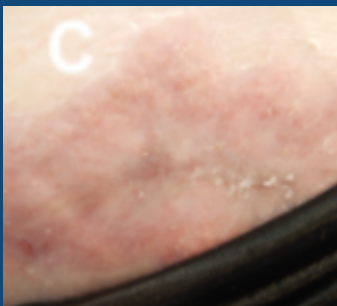
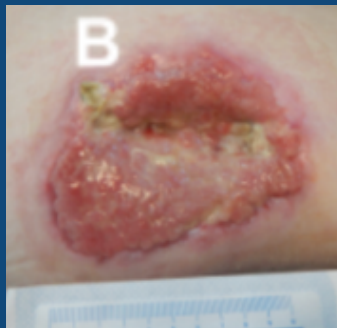
- Call 508-936-1657
- Schedule an appointment online: [www.northborodoctor.com](http://www.northborodoctor.com)
- Scan the QR Code



[www.NorthboroDoctor.com](http://www.NorthboroDoctor.com)

# CASE STUDY

From Nursing Home to Office Patient:  
Adapting Care for All Patient  
Populations



## HOW TO GET EXCELLENT SKIN CARE

If you or one of your loved ones  
would like to receive the same kind  
of care, contact us :

- Call 508-936-1657
- Schedule an appointment online:  
[www.northborodoctor.com](http://www.northborodoctor.com)
- Scan the QR Code



[www.NorthboroDoctor.com](http://www.NorthboroDoctor.com)